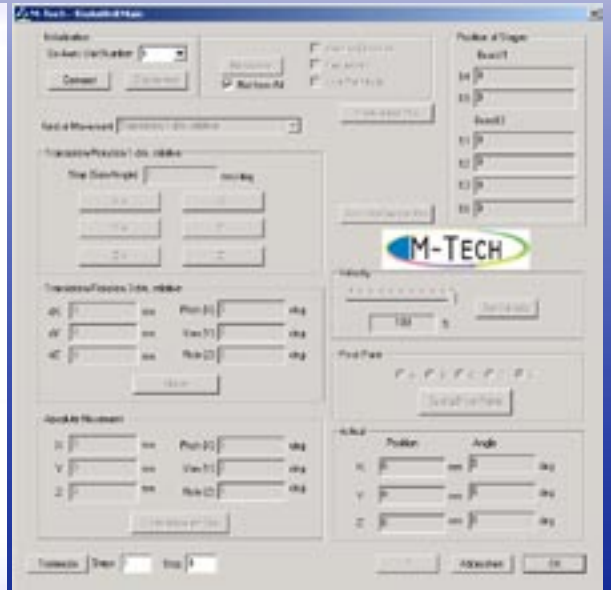


MA100 - SixAxis UNIT

A powerfull alignment tool



Technical Data:

Linear Positioning (x-y-z)

range	10 mm
closed loop resolution	100 nm
design resolution	5 nm
maximum velocity	2mm/sec.

Rotational Positioning (Roll-Yaw-Pitch)

range	+/- 7 deg.
maximum velocity	2 deg./sec

Mounting Platform

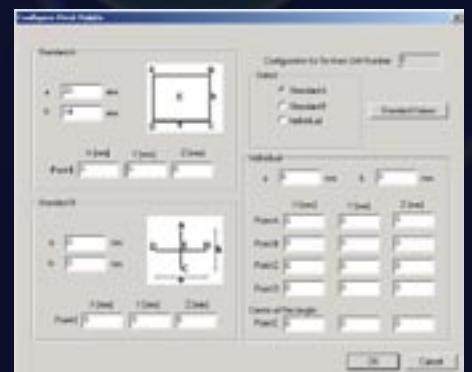
total height	144 mm
maximum load capacity	5000 gramms
environments: manufacturing:	clean room, lab

Control System:

2x standard PCI controller for standard PCs	
+ controll software (C++, LabView)	
power requirements	100 Watt
voltage	100-250 V universal input

M-Tech

has developed a powerfull alignment tool that is easy to work with. It has a reliable closed loop resolution and an outstanding easy to use software which incorporates flexible script based routines that are ready to go and easy to customize with our open architecture. You can set a virtual rotation point or you can position it freely in space. All software is compatible with C++ and LabView.



Examples of Application

- Optical Device Testing
- Micro-Manipulation
- Fiber Alignment
- Photonic Alignment & Packaging
- Micro-Machining
- Semiconductor Handling Systems

Learn more about
SixAxis Unit at
www.m-tech.at